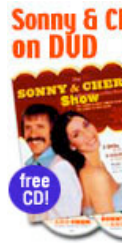
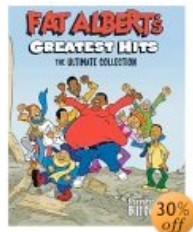




Amos & Andy DVDs!





by Hal Erickson

LARRY SMITH



"Larry Smith had a kids' after-school cartoon and puppet romp that aired on WXIX (Channel 19) in the late sixties through early seventies, I believe just dubbed "The Larry Smith Show." It revolved around sketches with the characters shown in these pictures, interspersed with cartoons.

"Hattie The Witch was the green witch puppet and she was the antagonist in most puppet sketches but usually lost, in the end, to either Snarfie or the good witch puppet (whose name escapes me at the moment). I believe Smith himself also appeared occasionally. The white dog was "Snarfie."

"There was no 'peanut gallery' or direct audience participation, but there were many call-in and mail-in contests, usually drawing contests, one of which I entered and had whatever I had drawn displayed on the "wall of fame" the show used for such contests. I got a postcard personally signed by Larry Smith (and Hattie The Witch and Snarfie, if I remember correctly) for



Cincinnati had three TV stations in operation as early as 1950, and for a while was a major source of network programming (especially for DuMont and ABC), so you can imagine that the city was pretty active in the field of live local programming - especially children's shows.

The earliest one I can remember (and the only one that I was actually on, as a member of the studio audience) was UNCLE AL, which was on WCPO from 1953 through 1989.

The star was Al Lewis (not the same actor who played "Grandpa Munster"), a cartoonist and accordion player who'd originally been hired as the station's art director and host for a mid-afternoon "ladies" program.



At the height of his popularity, Uncle Al was seen Monday through Friday, 90 minutes each morning. The Saturday-morning version of his show appeared on the ABC network from October 18 1958 through September 19 1959 (it was replaced by LUNCH WITH SOUPY SALES)



Uncle Al wore a striped jacket and a straw hat, and was seldom seen without his accordion. His base of operations was a "fairlyland" style clubhouse, with dancing scarecrows and talking trees.

His cohorts included Captain Windy (aka Al's wife Wanda Lewis), who, by way of a filmclip, was shown "coming in for a landing" on every show (Lewis was an aviation enthusiast, and flew his own private plane).



A huge selection of lost children's shows here!

Get TVparty PLUS!
Access the **massive TVparty archives** for only \$5.00

Mysteries and Scandals! Local & National Kid Shows! Outtakes and Blunders! Crazy commercials! Tons of cool stuff you can't find anywhere but here!

There are over **500 pages** and over **40 hours of video and audio** clips on TVparty PLUS!
It's the equivalent of a 3,000 page book!

Tell me more!

Hi
Access the huge TVparty library!

Click to Pay
fully refundable

amazon honor system
Learn more.

