

VAIL – RCM

→ RELIABILITY CENTRED MAINTENANCE

Developing effective maintenance strategies

Improve the reliability of your facility through well targeted optimized maintenance strategies

VAIL-RCM is software tool, developed to optimize preventive maintenance activities based on Reliability Centered Maintenance (RCM). In principle, this implies that the maintenance strategy is established on the basis of a systematic evaluation of failure modes and their effect on safety, production loss and asset cost. The actual risk evaluations and recommended strategies are based on the common experience of the participating organizations taking into account generic information.

WHY (VAIL-RCM)?

VAIL-RCM software provides RCM analysis, data management and reporting. This software is based on OREDA Offshore Reliability Data 2002 standards and provides extensive customization capabilities. VAIL-RCM helps the RCM analyst to analyze the RCM in three levels (FMEA/FMECA, risk analysis & PMRs (Plant Maintenance Routines)).

FULLY FEATURED

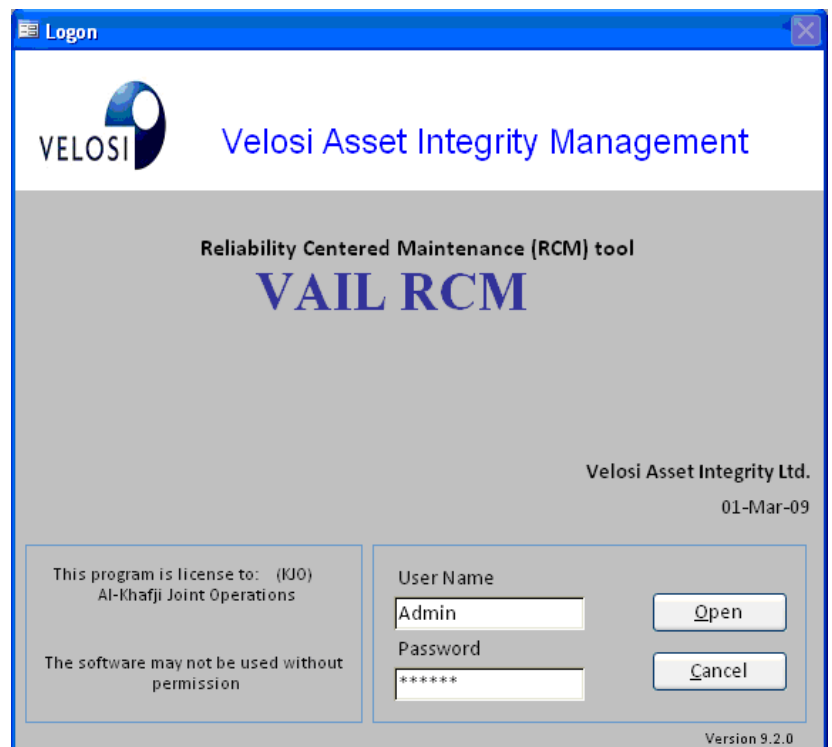
- Carry out FMEA studies to evaluate the effects of remedial actions before they are implemented
- Specify your acceptance limits for safety and economic risk to get the most cost-effective maintenance plan that maintain the risk below the acceptable levels

USER FRIENDLY

- Consistent Microsoft Windows interface with navigation using Explorer style browser
- Form or spreadsheet view for flexible data handling

FLEXIBLE

- Create management or technical reports
- Use service history inspection results to adjust the risk levels according to actual findings and revise the maintenance plan accordingly



Logon screen view

For further information please contact us @

Phone: +971 2 6349 815

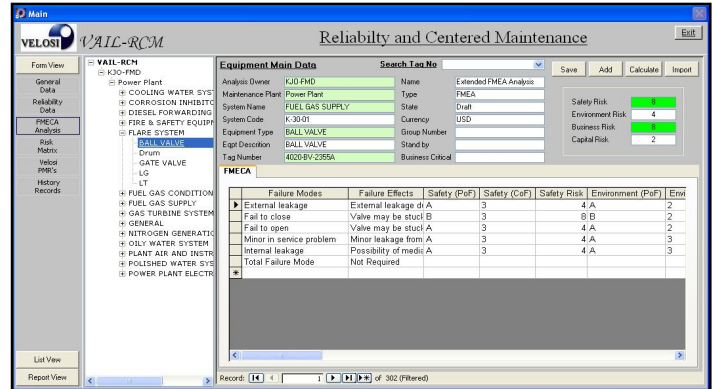
Fax: +971 2 6349 816

Email: vaim@vaim.ae



FUNCTIONAL FEATURES

- Includes Inbuilt FMEA and reliability data of equipments based on OREDA, which works like as an expert system.
- Capable to perform FMECA, risk analysis and Planned Maintenance Routines.
- Advanced Reporting Features (trends /dashboard)
- Advanced User View Capabilities, where User can make their own queries to view Information.
- MTBF & MTRR strategy for reliability analysis.
- Risk matrix methodology.
- Advanced data importing/exporting features.



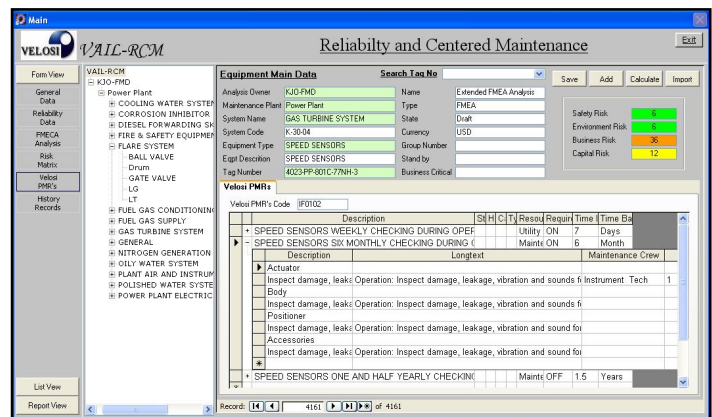
FMEA screen view

ANALYSIS LEVELS

VAIL-RCM uses the following analysis levels to build up reliability maintenance strategy.

FMECA ANALYSIS

It performs FMECA (Failure Mode, Effects, and Criticality Analysis) based on its Inbuilt Database (OREDA offshore Reliability Database) in the most effective and efficient way.



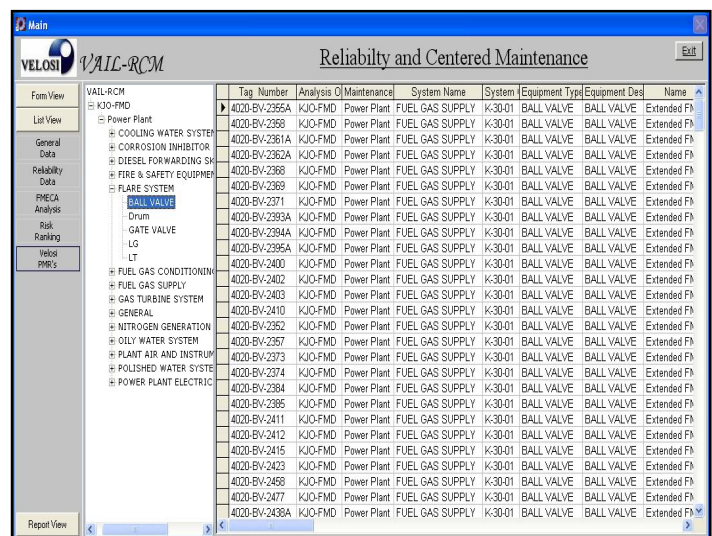
PMR screen view

OPERATOR RELIABILITY DATA

Includes Operator Reliability Data for each Equipment Type based OREDA Offshore Reliability Data 2002 Standards.

RISK MATRIX ANALYSIS

It identifies, analyze, treat and monitor risks associated with each Tag, and shows in a Risk Matrix Form in a more effective way that will enable to minimize losses and maximize its opportunity. It counts the total number of tags at Risk in each combination of Probability of Failure and Consequences of Failure.



Data sheet view of data

For further information please contact us @

Phone: +971 2 6349 815

Fax: +971 2 6349 816

Email: vaim@vaim.ae